

# AQUA LOW FOG

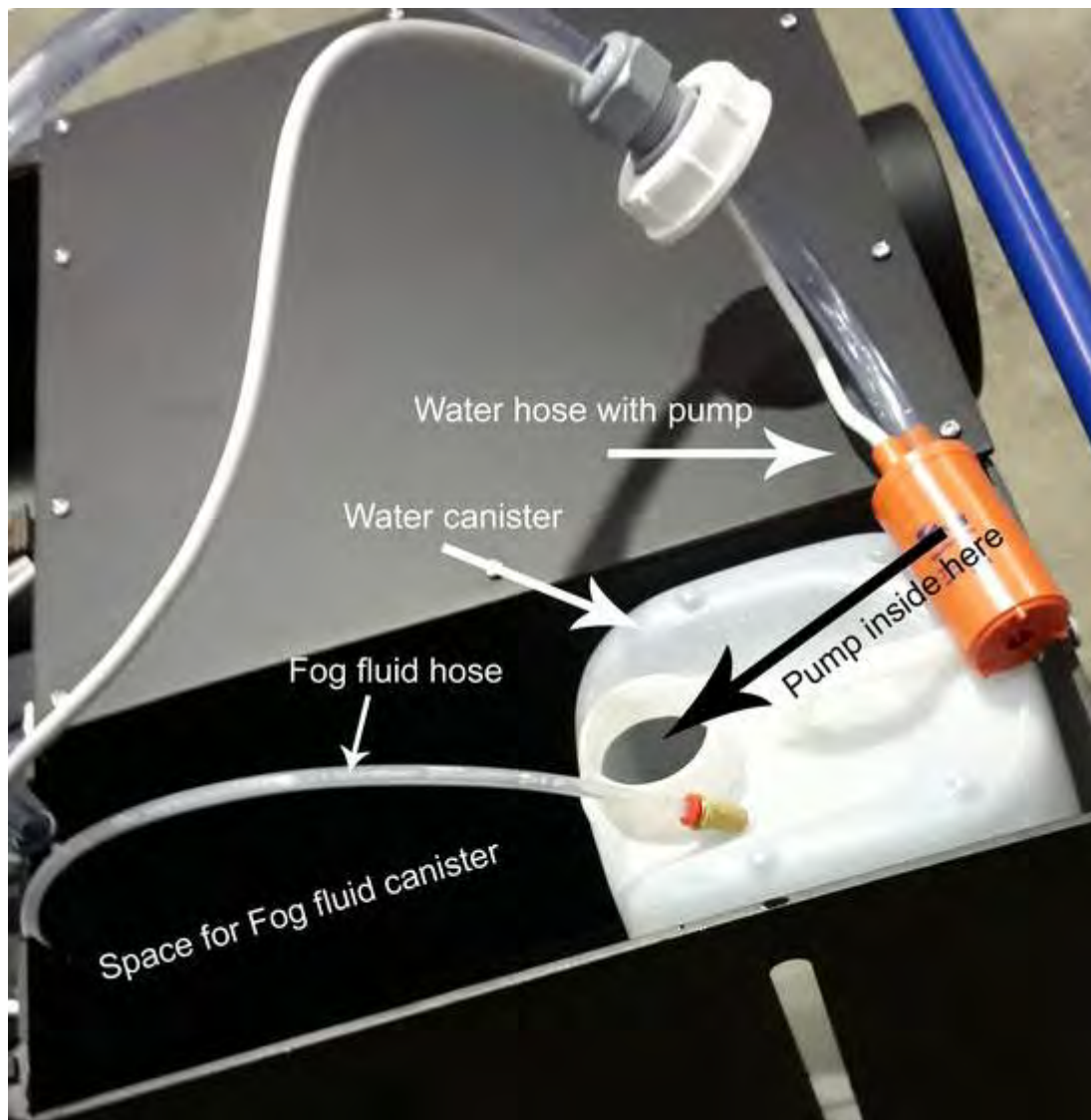
## VARIO 8 & 10

### USER MANUAL



**The following is to keep in mind before putting the machine into operation and carry out:**

- The machine must be in balance
- The pump selector switch (illuminates blue in the operating and indicating that the feed pump operates) must not be pressed
- Fill the supplied water canister with **DISTILLED** water, put into the provided recess of the machine and insert the hose with the pump into the canister
- Put the fog fluid canister also in the provided recess and insert the fluid hose into the canister



# DMX addressing

By the red rotary switches



## DMX channel assignment:

Channel 1: Fog output 0-100%

Channel 2: Fan speed 0-100%

Channel 3: The severity of the fog

Output starts at 50% slider setting (50% = 0 output, 100% = 100% output)

The higher the output the heavier the fog gets.

### ATTENTION:

Too high output of channel 3 may cause excessive moisture on the floor!  
Depends always on the humidity in the room, how many % creates a beautiful ground fog.

Before using channel one for fog output channel two (fan speed) has to be set 100% and back to 0%

Then you can connect the mains to the machine using a CEE16 cable and switch on with the red power switch for operation.

## The filling process:

After pressing the red power switch it starts pumping from the water tank to fill water into the machine.

The pump selector switch illuminates **RED** while operating



After the water has been completely drained from the water tank, the red power switch of the machine must be switched off again.

Remove water tank, fill it up, put into place and switch on the machine again.

This process can be repeated up to maximum three times.

### **ATTENTION:**

**Should the operation repeated more than three times, the machine must be switched off immediately, as otherwise water can leak from the machine. In this case, please contact your dealer or manufacturer.**

## Pump-out procedure:

To do this the pump switch (see image) must be snapped and the sewage pump button illuminates **green**



On the front side of the machine there is a Gardena connection, via which you can connect a hose to pump out the waste water .

The Green lit push button must be kept pressed until the water is pumped out of the machine.

See image below



**ATTENTION:**

**The water must be pumped out daily from the machine!**

**Drain before transportation and storage!**

**Do not open machine while connected to power and during operation!**

**MT-ELECTRONIC**

Uferpromenade 15

2325 Himberg

Austria, Europe

Tel.: +43 699 12334455

Email: [office@mt-electronic.com](mailto:office@mt-electronic.com)