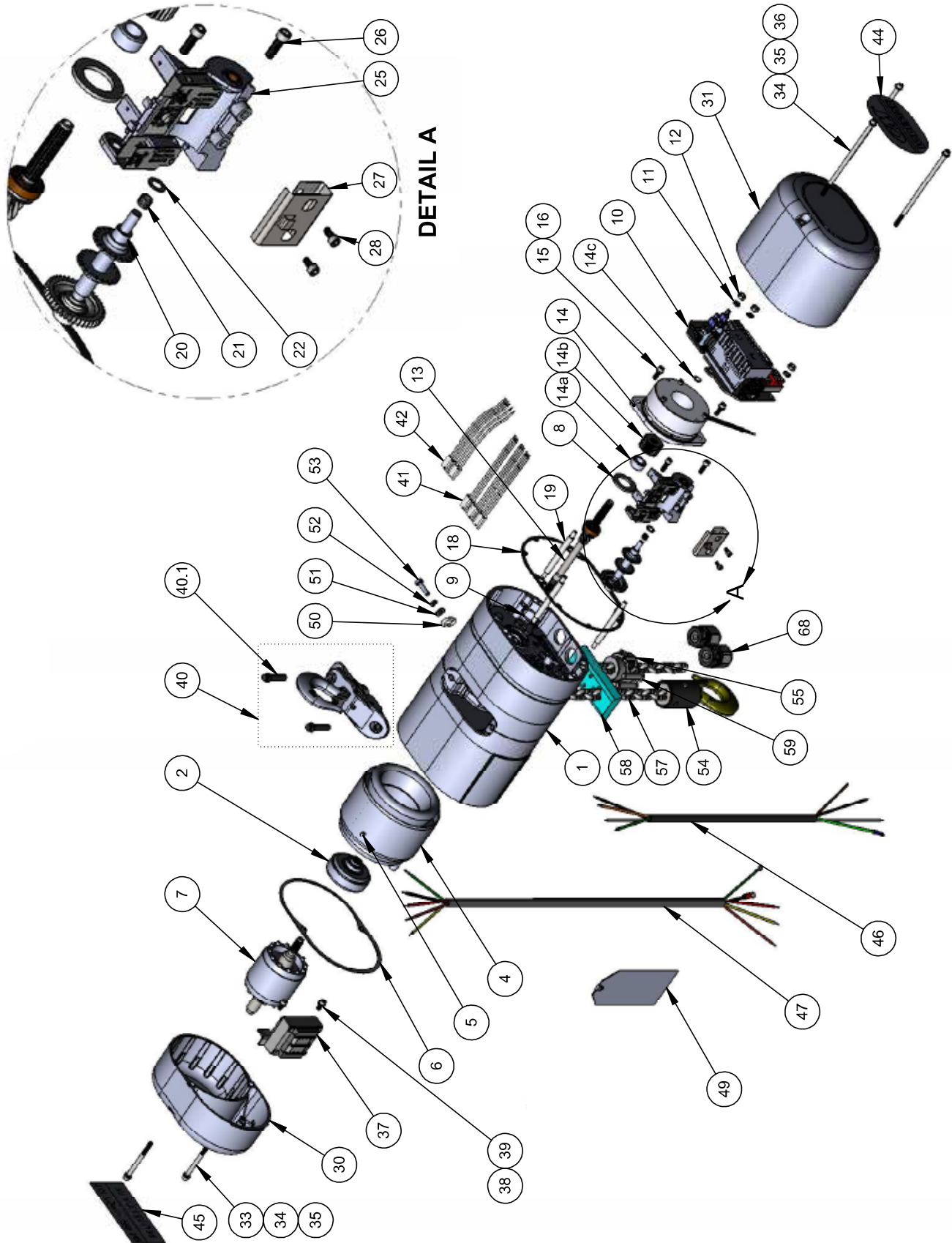


**MODELS B, C & F
SMALL FRAME**



SMALL FRAME MODELS B, C & F

Item No.	Description	Model B	Model C	Model F	QTY.
1	GEARBOX SUB-ASSEMBLY - SEE GEARBOX SECTION FOR DETAIL	10001314B	10001313B	10001314B	1
2	CLUTCH ASSEMBLY	00000240	00000241	00000241	1
	D8+ CLUTCH ASSEMBLY	-	-	00000240	
3	EMPTY	-	-	-	-
4	STATOR - 115/230V-1-50	-	00000472	-	1
	STATOR - 115/230V-1-60	-	00000462	-	
	STATOR - 230/460V-3-50/60	-	00000461	-	
5	STATOR PIN	-	983541	-	1
6	MOTOR COVER GASKET	-	27487	-	1
7	ROTOR ASSEMBLY 115/230V-1-50/60	-	00000261	-	1
	ROTOR ASSEMBLY 230/460V-1-50/60	-	00000260	-	
8	BRAKE WASHER	-	10001309	-	1
9	DRIVESHAFT O-RING	-	10001355	-	1
10	CONTACTOR PLATE SUB-ASSEMBLY	SEE CONTACTOR SUB-ASSEMBLY SECTION			1
11*	CONTACTOR PLATE LOCKWASHER	-	982226	-	3
12*	CONTACTOR PLATE NUT	-	982514	-	3
13	DRIVESHAFT SUB-ASSEMBLY	-	10001348	-	1
14	BRAKE ASSEMBLY	-	SEE BRAKE SECTION	-	1
14a	BRAKE HUB SPACER	-	SEE BRAKE SECTION	-	1
14b	BRAKE HUB	-	SEE BRAKE SECTION	-	1
14c	BRAKE HUB SNAP-RING	-	SEE BRAKE SECTION	-	1
15	BRAKE LOCKWASHER	-	982226	-	2
16	BRAKE MOUNTING SCREW	-	982708	-	2
17	EMPTY	-	-	-	-
18	BACK FRAME COVER GASKET	-	10001344	-	1
19*	CONTACTOR PLATE MOUNTING STUD	-	27836	-	3
20*	LIMIT SWITCH SHAFT SUB-ASSEMBLY (44TPI)	-	00000521	-	1
	LIMIT SWITCH SHAFT SUB-ASSEMBLY (56TPI)	-	00000522	-	
	LIMIT SWITCH SHAFT SUB-ASSEMBLY (64TPI)	-	00000523	-	
21*	LIMIT SWITCH SHAFT SPRING	-	28712	-	1
22*	LIMIT SWITCH SHAFT WASHER	-	987878	-	1
23	EMPTY	-	-	-	-
24	EMPTY	-	-	-	-
25*	LIMIT SWITCH BRACKET SUB-ASSEMBLY - 1Ø	-	10001737	-	1
	LIMIT SWITCH BRACKET SUB-ASSEMBLY - 3Ø	-	10001734	-	1
26*	LIMIT SWITCH BRACKET SCREWS	-	10001265	-	2
27*	LIMIT SWITCH SPRING GUIDE	-	52737	-	1
28*	LIMIT SWITCH GUIDE MOUNTING SCREW	-	10001266	-	2
29	EMPTY	-	-	-	-
30	MOTOR COVER	-	27059	-	1
31	BACK FRAME COVER	-	10001341B	-	1
32	EMPTY	-	-	-	-
33	MOTOR COVER SCREW	-	10001652	-	2
34	COVER SCREW WASHER	-	982251	-	5
35	COVER SCREW RETAINER	-	00001747	-	5
36	BRAKE COVER SCREW	-	10001653	-	3
37*	TRANSFORMER 24V SECONDARY - 3Ø	-	00000586T	-	1
	TRANSFORMER 48V SECONDARY - 3Ø	-	00000587T	-	
	TRANSFORMER 115V SECONDARY - 3Ø	-	00000588T	-	
38	TRANSFORMER LOCKWASHER	-	982226	-	2
39	TRANSFORMER MOUNTING SCREW	-	73715	-	2
40	UPPER SUSPENSION ASSEMBLY	SEE SUSPENSION SECTION			1
40.1	UPPER SUSPENSION MOUNTING BOLT	-	987554	-	2
41	HARNESS - MOTOR - 1Ø	-	00001543	-	1
	HARNESS - MOTOR - 3Ø	-	10001735	-	
	HARNESS - MOTOR - DIRECT CONTROL	-	10001124	-	
42	HARNESS - TRANSFORMER - 3Ø	-	00000749	-	1
43	EMPTY	-	-	-	-
44	SERIES LABEL	-	00000780	-	1
45	CAPACITY LABEL	00000772	-	00000773	1
	D8+ CAPACITY LABEL	-	-	00000213	

Item No.	Description	Model B	Model C	Model F	QTY.
46	POWER CORD - 1Ø - SHORT CORD (4') CONTACT FACTORY FOR OTHER LENGTHS		23620204		1
	POWER CORD - 3Ø - SHORT CORD (4') CONTACT FACTORY FOR OTHER LENGTHS		23620004		
	POWER CORD - DIR. CON. - SHORT CORD (4') CONTACT FACTORY FOR OTHER LENGTHS		23620404		
47*	CONTROL CORD - 1Ø & 3Ø - 6' NO PENDANT CONTACT FACTORY FOR OTHER OPTIONS		23620106		1
48***	CONTROL CORD WARNING LABEL		81704		1
49	INSTRUCTION TAG - 1Ø & 3Ø		28275		1
	INSTRUCTION TAG - DIRECT CONTROL		00000771		
50	LOOSE END LINK		27351		1
51	LOOSE END WASHER		954802		1
52	LOOSE END LOCK WASHER		982226		1
53	LOOSE END SCREW		82554		1
54	LOWER HOOK BLOCK SUB-ASSEMBLY		SEE HOOK BLOCK SECTION		1
55	CHAIN STOP KIT		24015K		1
56	EMPTY		-		-
57	LOAD CHAIN (OIL & BURNISHED)		85889		AS REQ'D
	LOAD CHAIN (ZINC PLATED)		85944		
	LOAD CHAIN (ZINC PLATED PHOSPHATE)		85965		
	LOAD CHAIN (NICKEL PLATED)		85915		
	LOAD CHAIN (DIN ZINC PLATED)		85973		
58	EXTERNAL CHAIN PLATE		10001294		1
59	EXTERNAL CHAIN PLATE MOUNTING SCREW		00000579		2
60***	RUBBER PLUG - DEAD END		27223		1
61***	WARNING LABEL		00000779		1
62***	WARNING LABEL		36981		1
63***	ROHS LABEL		00000782		1
64***	LABEL, ELECTRICAL INFORMATION		24846		1
65***	CHAIN LABEL		928894		1
66***	WARNING LABEL, ELECTRICAL HAZARD		24842		1
67***	CE LABEL		40219		1
68	CORD GRIPS		10001840		2 (1*)
69***	CORD GRIP PLUG		10001855		1**

*Not required for Direct Control units

**Only required for Direct Control units

***Not shown in exploded views