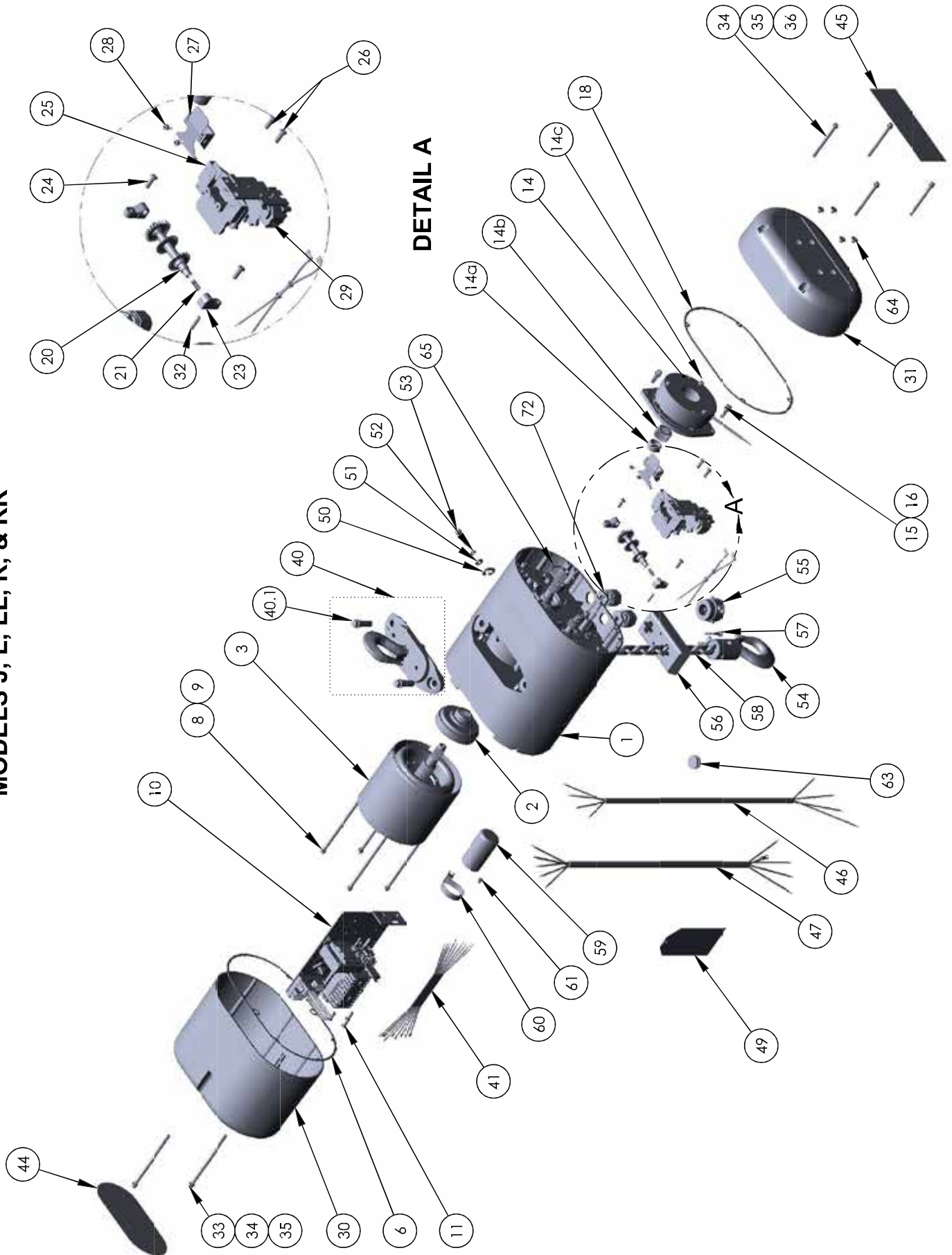


**MODELS J, L, LL, R, & RR  
LARGE FRAME**

**MODELS J, L, LL, R, & RR**



# MODELS J, L, LL, R, & RR LARGE FRAME

Item No.	Description	Model J	Model L	Model R	Model JJ	Model LL	Model RR	QTY.	
1	GEARBOX SUB-ASSEMBLY - SEE GEARBOX SECTION FOR DETAIL	10001522B	10001371B		10001316B	10001315B		1	
2	CLUTCH ASSEMBLY		00000242			00000243		1	
	D8+ CLUTCH ASSEMBLY	-	00000288			00000242			
3	3/4 MOTOR - 115V - 1Ø		00000401			-		1	
	3/4 MOTOR - 230/460V - 3Ø		00000440			00000450			
	3/4 MOTOR - 230/460V - 3Ø DIRECT CONTROL		00000402			00000408			
4	EMPTY		-			-		-	
5	EMPTY		-			-		-	
6	MOTOR COVER GASKET		35845					1	
7	EMPTY		-			-		-	
8	MOTOR SCREW LOCKWASHER		982226					4	
9	MOTOR MOUNTING SCREW		87377			87336		1	
10	CONTACTOR PLATE SUB-ASSEMBLY	SEE CONTACTOR SUB-ASSEMBLY SECTION							1
11	CONTACTOR PLATE MOUNTING SCREW		983656					3	
12	EMPTY		-			-		-	
13	EMPTY		-			-		-	
14	BRAKE ASSEMBLY		SEE BRAKE SECTION					1	
14a	BRAKE HUB SPACER		SEE BRAKE SECTION					1	
14b	BRAKE HUB		SEE BRAKE SECTION					1	
14c	BRAKE HUB SNAP-RING		SEE BRAKE SECTION					1	
15	BRAKE LOCKWASHER		945851					2	
16	BRAKE MOUNTING SCREW		10001697					2	
17	EMPTY		-			-		-	
18	BACK FRAME COVER GASKET		10001345					1	
19	EMPTY		-			-		-	
20*	LIMIT SWITCH SHAFT SUB-ASSEMBLY (44TPI)		00000524			00000525		1	
	LIMIT SWITCH SHAFT SUB-ASSEMBLY (56TPI)		00000526			00000527			
	LIMIT SWITCH SHAFT SUB-ASSEMBLY (64TPI)		00000528			00000529			
21*	LIMIT SWITCH SHAFT SPRING		35703					1	
22	EMPTY		-			-		-	
23*	LIMIT SWITCH BEARING		35751					2	
24	LIMIT SWITCH BEARING SCREWS		983656					2	
25*	LIMIT SWITCH BRACKET SUB-ASSEMBLY		36827					1	
26*	LIMIT SWITCH BRACKET SCREWS		983656					2	
27*	LIMIT SWITCH SPRING GUIDE		52500					1	
28*	LIMIT SWITCH GUIDE MOUNTING SCREW		983614					2	
29*	TERMINAL STRIP SUB-ASSEMBLY	SEE TERMINAL STRIP SECTION							1
30	MOTOR COVER		36025B					1	
31	BACK FRAME COVER		10001343B					1	
32	BACK FRAME COVER PINS		983784					4	
33	MOTOR COVER SCREW		10001654					2	
34	COVER SCREW WASHER		982251					6	
35	COVER SCREW RETAINER		00001747					6	
36	BRAKE COVER SCREW		10001655					4	
37	EMPTY		-			-		-	
38	EMPTY		-			-		-	
39	EMPTY		-			-		-	
40	UPPER SUSPENSION ASSEMBLY	SEE SUSPENSION SECTION							1
40.1	UPPER SUSPENSION MOUNTING BOLT		36849					2	
41*	HARNESS - MOTOR - 1Ø		000001545					1	
	HARNESS - MOTOR - 3Ø		00001547						
	HARNESS - MOTOR - 3Ø - D8+		00000203						
42	EMPTY		-			-		-	
43	EMPTY		-			-		-	
44	SERIES LABEL	00000781							1
45	CAPACITY LABEL	00000774	00000775	00000776	00000774	00000775	00000776	1	
	D8+ CAPACITY LABEL	-	00000783	00000784	00000214	00000214	00000215		

Item No.	Description	Model J	Model L	Model R	Model JJ	Model LL	Model RR	QTY.
46	POWER CORD - 1Ø - SHORT CORD (4') CONTACT FACTORY FOR OTHER LENGTHS	23620704						1
	POWER CORD - 3Ø - SHORT CORD (4') CONTACT FACTORY FOR OTHER LENGTHS	23620504						
	POWER CORD - DIR. CON. - SHORT CORD (4') CONTACT FACTORY FOR OTHER LENGTHS	23620904						
47*	CONTROL CORD - 1Ø & 3Ø - 6' NO PENDANT CONTACT FACTORY FOR OTHER OPTIONS	23620606						1
48***	CONTROL CORD WARNING LABEL	81704						1
49	INSTRUCTION TAG - 1Ø & 3Ø	28275						1
	INSTRUCTION TAG - DIRECT CONTROL	00000771						
50	LOOSE END LINK	35367						1
51	LOOSE END WASHER	954807						1
52	LOOSE END LOCK WASHER	945851						1
53	LOOSE END SCREW	10001698						1
54	LOWER HOOK BLOCK SUB-ASSEMBLY	SEE HOOK BLOCK SECTION						1
55	CHAIN STOP KIT	24016K						1
56	EXTERNAL CHAIN PLATE	10001295	10001295	10001978	10001295	10001295	10001978	1
57	CHAIN PLATE MOUNTING SCREW	10001296						2
58	LOAD CHAIN (OIL & BURNISHED)	85979						AS REQ'D
	LOAD CHAIN (ZINC PLATED)	85949						
	LOAD CHAIN (ZINC PLATED PHOSPHATE)	85966						
	LOAD CHAIN (NICKEL PLATED)	85916						
	LOAD CHAIN (DIN ZINC PLATED)	85983						
59****	SOLID STATE REVERSE SWITCH	35499						1
60****	SOLID STATE REVERSE SWITCH CLAMP	27275						1
61****	SOLID STATE REVERSE SWITCH SCREW	982873						1
62	EMPTY	-						-
63	RUBBER PLUG	27891						1
64	BACK FRAME COVER HOLE PLUGS	00000574						4
65	DRIVESHAFT O-RING	10001392						1
66***	WARNING LABEL	00000211						1
67***	ROHS LABEL	00000782						1
68***	LABEL, ELECTRICAL INFORMATION	24846						1
69***	CHAIN LABEL	928894						1
70***	WARNING LABEL, ELECTRICAL HAZARD	24842						2
71***	CE LABEL	40219						1
72	CORD GRIPS	10001840						2 (1*)
73***	CORD GRIP PLUG	10001855						1**
74***	WARNING LABEL	00000209						1

\* Not required for DireCt Control units  
\*\* Only required for DireCt Control units  
\*\*\* Single phase only  
\*\*\*\* Not shown exploded views