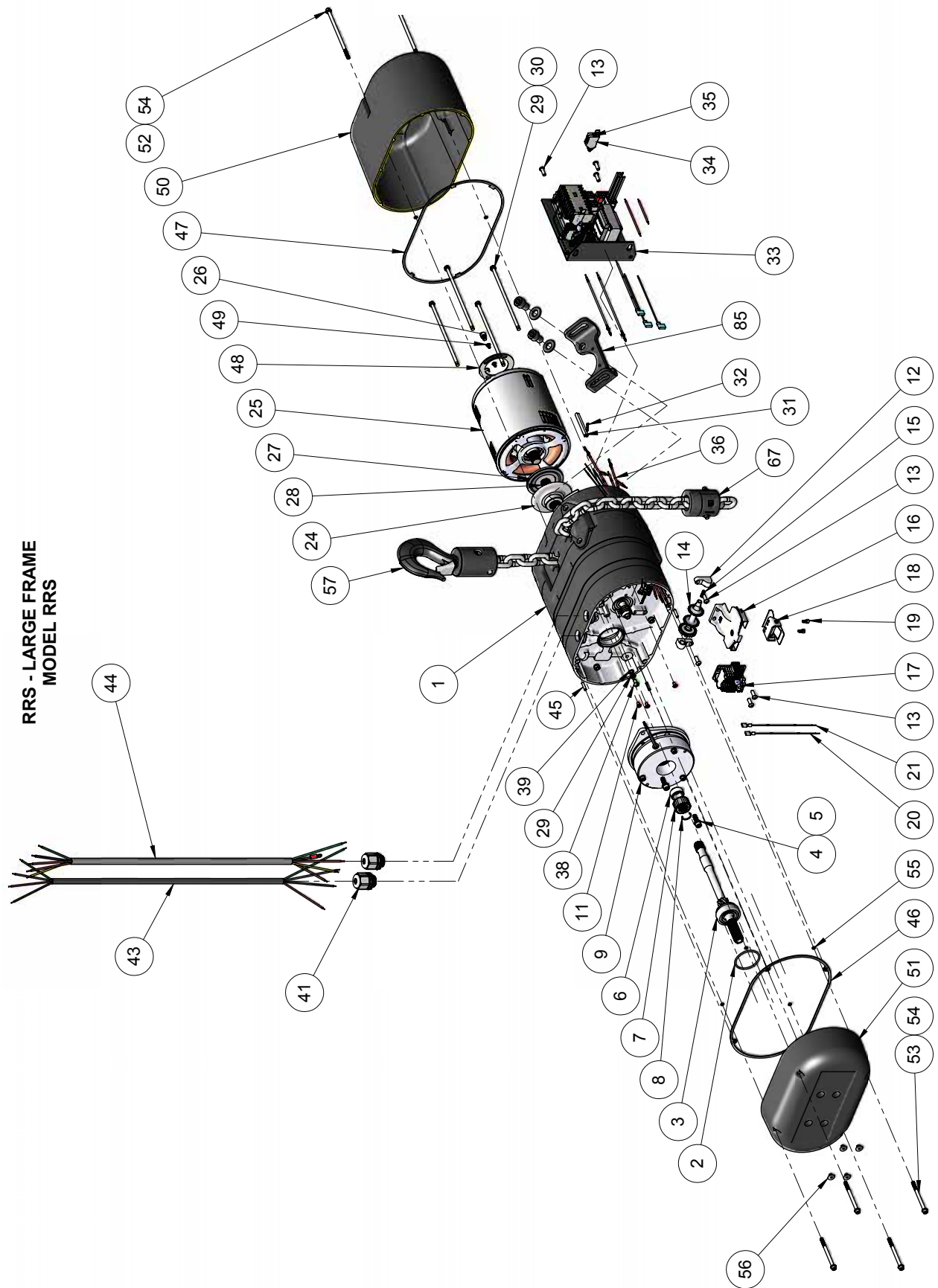


**FIGURE 30. MODEL RRS**



# MODEL RRS

ITEM NO.	PART NUMBER	DESCRIPTION	UNIT	Model RRS	Model RRS (DC)	Model RRS (D8+)	Model RRS (D8+, DC)
1	10001913B	GBOX-A-MDL RRS-BLK	EA	1	1	1	1
2	10001392	O-RING BUNA-N 3MM X 52MM ID	EA	1	1	1	1
3	10001353	DRIVE SHAFT ASS'Y RRS-DC-10T	EA	1	1	1	1
4	945851	LOCKWASHER, 5/16 X .125 X .078	EA	2	2	2	2
5	10001697	5/16-18 X 1" SOCKET HEAD CAP SCREW	EA	2	2	2	2
6	00001433	HUB SPACER V2 DC INTORQ BRAKE	EA	1	1	2	2
7	00001431	V2 LODESTAR, SIZE 10 HUB	EA	1	1	2	2
8	10409711	ROTOR CLIP RETAINING RING	EA	1	1	1	1
9	10001249	V2 #10 BRAKE 205V 2HP	EA	1	1	-	-
	10001452	V2 #10 DOUBLE BRAKE 205V 2 HP	EA	-	-	1	1
10*	35766	RETAINING RING	EA	-	-	1	1
11	982454	PLUG, SERIES T- NO. 0 CAPPLUG	EA	3	5	3	5
12	35751	BEARING LIMIT SWITCH	EA	2	-	2	-
13	983656	BHCS - 1/4-20 X .75 ~ UNC-2A	EA	7	3	7	3
14	00000524	V2 LIMIT SWITCH SHAFT ASSY	EA	1	-	1	-
15	35703	SPRING	EA	1	-	1	-
16	36827	LIMIT SWITCH AND BRACKET ASSY	EA	1	-	1	-
17	10001270	V2 TERMINAL STRIP ASSEMBLY	EA	1	-	1	-
18	52500	SWITCH, ROTATABLE LIMIT S/A	EA	1	-	1	-
19	10001266	#10-24 X 3/8" SKT HEAD CAP SCREW LS	EA	2	-	2	-
20	10001665	W4 JUMPER	EA	1	-	1	-
21	10001666	W5 JUMPER	EA	1	-	1	-
22*	987878	WASHER .328" X 9/16" X .032	EA	-	1	-	1
23*	10565301	SCREW SOCKET BUTTON HEAD	EA	-	1	-	1
24	10001834	CLUTCH - DRIVEN HUB	EA	1	1	1	1
25	10001813	MOTOR - 2HP - 230/460V - PLUG	EA	1	-	1	-
	10001815	MOTOR - 2HP - 230/460V	EA	-	1	-	1
26	10001962	5/16"-18 X .38" SOCKET HD CAP	EA	1	1	1	1
27	10001854	CLUTCH - DRIVING HUB	EA	1	1	1	1
28	10001835	RETAINING RING-EXTERNAL	EA	1	1	1	1
29	982226	LOCKWASHER 1/4 X .109 X .062	EA	5	6	5	6
30	87377	SCREW 1/4-20 X 7-7/16	EA	4	4	4	4
31	982158	LINE CONNECTOR	EA	2	2	2	2
32	983638	TERMINAL	EA	1	1	1	1
33	10001066	CTRLS ASSY-DV-110V	EA	1	-	1	-
	10001070	CTRLS ASSY-DIRECT CTRL	EA	-	1	-	1
34	10001405	P-FU 5X20-5 FUSE PLUG	EA	2	-	2	-
35	00000394	FUSE-5MM X 20MM-1A	EA	2	-	2	-
36	00001547	WIRING HARNESS V2 LVC 115V	EA	1	-	1	-
37*	11782704	CONNECTOR PUSHWIRE ORANGE	EA	-	10	-	10
38	987827	SCREW 1/4-20 UNC-2A X 1/2"	EA	1	1	1	1
39	927835	WASHER 1/4 (.265) X .50 X .032	EA	1	-	1	-
40*	20940	GROUND LABEL	EA	-	1	-	1
41	10001840	CORD GRIP 3/4" NPT	EA	2	2	2	2
42*	10001286	GLAND SOLID	EA	-	1	-	1
43	23620504	V2 3PH POWER CORD 4FT	EA	1	-	1	-
	23620904	V2 DIRECT CONTROL POWER CORD	EA	-	1	-	1
44	23620606	CONTROL CORD 6'	EA	1	-	1	-
45	983784	PIN 3/16 X 7/8 SPRING	EA	4	4	4	4
46	10001345	GASKET - V2 BACKFRAME COVER	EA	1	1	1	1
47	10001019	GASKET-MOTOR COVER	EA	1	1	1	1
48	10001836	LOCKING PLATE	EA	1	1	1	1
49	10001902	SCREW 10-24 X 5/16	EA	2	2	2	2
50	36025B	MOTOR HOUSING COVER	EA	1	1	1	1
51	10001343B	V2 BRAKE END COVER-MACH-BLACK	EA	1	1	1	1
52	10001654	1/4-20 X 5.75" SKT HD CAP SCREW	EA	2	2	2	2
53	10001655	1/4-20 X 3.5" SKT HD CAP SCREW	EA	4	4	4	4
54	982251	WASHER - .252 ID X .19 WALL	EA	6	6	6	6
55	00001747	O-RING 008	EA	6	6	6	6
56	00000574	HOLE PLUG	EA	4	4	4	4
57	10001052	LOWER HOOK ASSEMBLY	EA	1	1	1	1
58*	85960EN	10mm CHAIN	FT	2	2	2	2
59*	88300	ENVELOPE PRINTED 9 X 12 WHITE	EA	1	1	1	1
60*	988331	ACCEPTANCE SHEET, HOIST TEST CERT	EA	1	1	1	1
61*	00001491	CARTON LABEL, LODESTAR	EA	2	2	2	2
62*	28714	PLATE,LIMIT SWITCH GUIDE	EA	1	1	1	1
63*	10001921	MANUAL, NH, ENT, ADJ CLUTCH	EA	1	1	1	1
64*	00001991	D8+ CE DECLARATION	EA	-	-	1	1
65*	00001990	D8 CE DECLARATION	EA	-	-	1	1
66*	85960LEL	LOOSE END LINK, .394	EA	1	1	1	1
67	10001029	CHAIN BLOCK KIT-10MM X 30MM	EA	1	1	1	1

ITEM NO.	PART NUMBER	DESCRIPTION	UNIT	Model RRS	Model RRS (DC)	Model RRS (D8+)	Model RRS (D8+, DC)
68*	24842	WARNING LABEL	EA	2	2	2	2
69*	24846	LABEL	EA	1	1	1	1
70*	10001267	WIRING DIAGRAM	EA	1	-	1	-
	10001115	WIRING DIAGRAM	EA	-	1	-	1
71*	00000781	V2 SERIES LABEL	EA	1	1	-	-
	00000793	V2 D8+ SERIES LABEL	EA	-	-	1	1
72*	I.D. LABEL	I.D. LABEL	EA	1	1	1	1
73*	BAR CODE	BAR CODE	EA	1	1	1	1
74*	40219	"CE" LABEL	EA	1	1	1	1
75*	00000782	LABEL, ROHS COMPLIANT	EA	1	1	1	1
76*	928894	CHAIN LABEL	EA	1	1	1	1
77*	00000209	D8+ WARNING LABEL	EA	1	1	1	1
78*	900K262	HOIST STORAGE TAG	EA	1	1	1	1
79*	927237	LABEL, DUAL VOLTAGE	EA	1	-	1	-
80*	00000776	CAPACITY LABEL	EA	1	1	-	-
	00000215	1000 KG D8+	EA	-	-	1	1
81*	36981	LABEL - WARNING	EA	1	1	-	-
	00000211	D8+/C1 Warning Label	EA	-	-	1	1
82*	28271	TAG-INSTRUCTION	EA	1	-	1	-
83*	10001967	D8 LABEL TRIANGLE	EA	1	1	-	-
	00000210	D8+ LABEL	EA	-	-	1	1
84*	927236	LABEL	EA	1	1	1	1
85	10001584	RRS CHAIN CONTAINER KIT	EA	1	1	1	1

\* ITEM NOT SHOWN IN EXPLODED VIEW