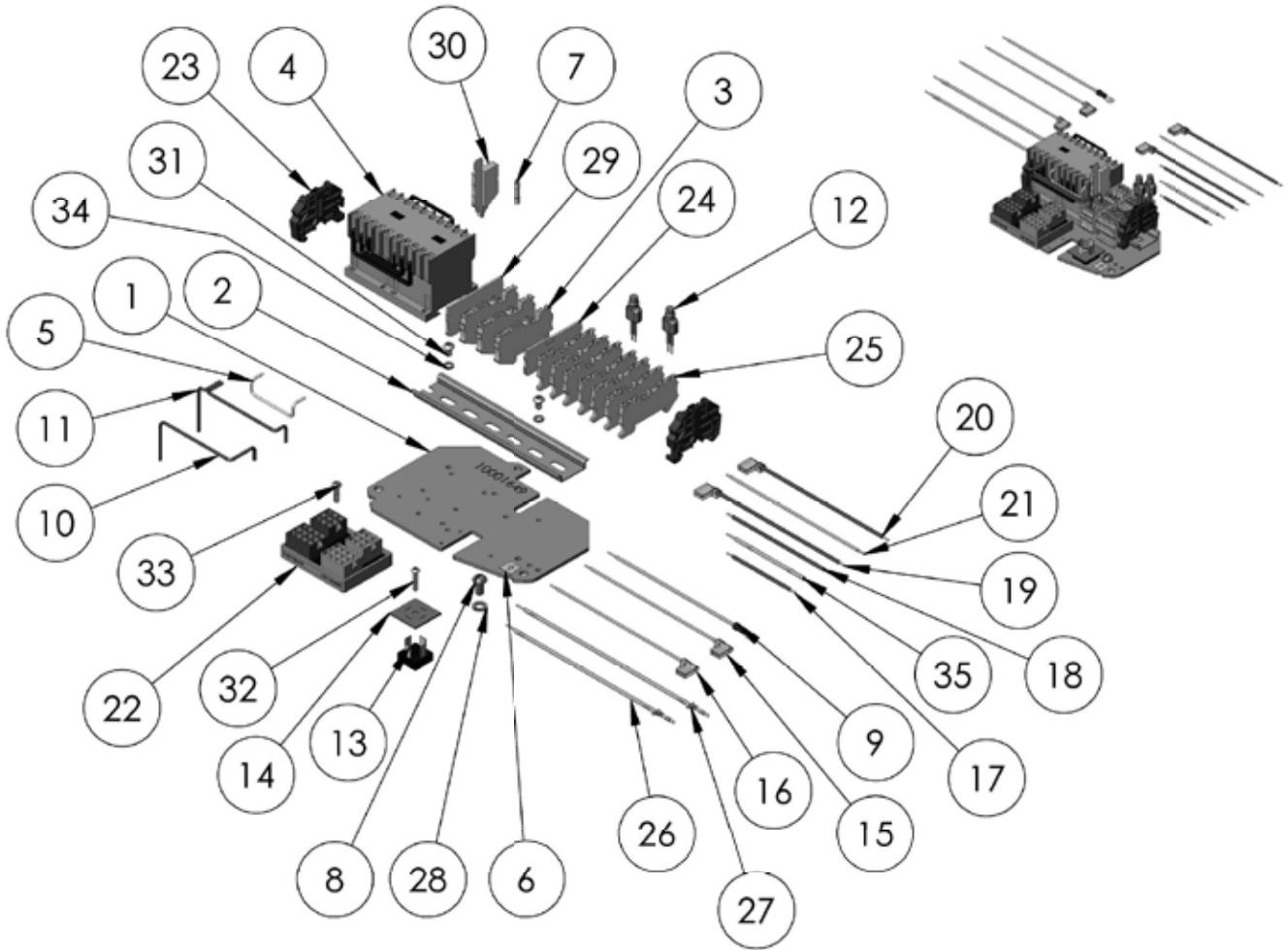


CONTACTOR PLATE ASSEMBLY FOR USE WITH DC BRAKE BHSE FUSED-3 PHASE 220/230-380/415/460-3-50/60-MODELS B, C, & F



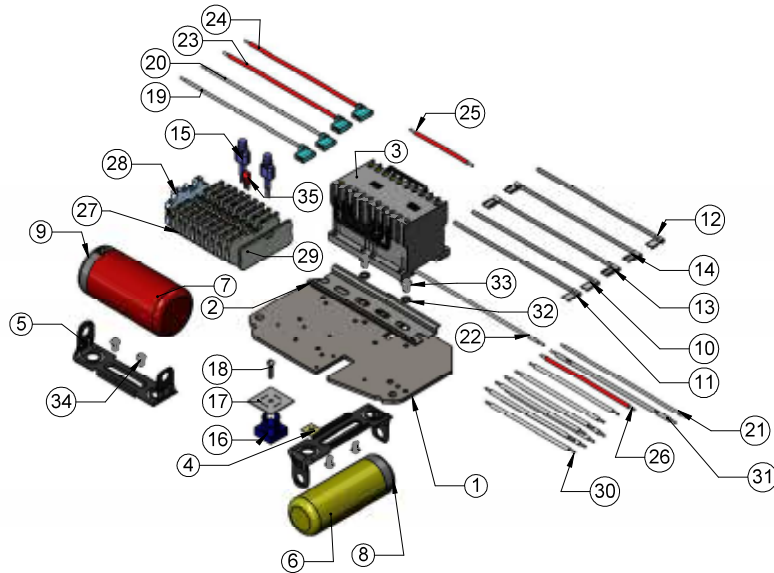
CONTACTOR BKT S/A	REVERSING CONTACTOR	SECONDARY VOLTAGE
10001638	28860	24V
10001639	24797	48V
10001640	24799	115V

Item No.	PART NO.	DESCRIPTION	Qty.
1	10001649	V1 CONTACTOR PLATE	1
2	29010	DIN-RAIL 6.50" LONG	1
3	10001404	PT 2,5-TG DISCONNECT TERMINAL BLOCK	3
4	SEE TABLE	REVERSING CONTACTOR	1
5	51847	JUMPER	1
6	20940	GROUND LABEL	1
7	00000393	FUSE-5MM X 20MM-500MA	1
7*	00000394	FUSE-5MM X 20MM-1A	2
8	987827	SCREW 1/4-20 UNC-2A X 1/2"	1
9	27189	JUMPER (G-Y)	1
10	00000750	JUMPER WIRE	1
11	00000751	JUMPER WIRE	1
12	00000535	SURGE SUPPRESSOR	2
13	70246	RECTIFIER	1
14	70274	RECTIFIER INSULATOR	1
15	00001500	B3 JUMPER	1
16	00001501	B4 JUMPER	1
17	00000537	B8 JUMPER	1
18	00000538	B9 JUMPER	1
19	00000376	B5 JUMPER	1

Item No.	PART NO.	DESCRIPTION	Qty.
20	00000205	B6 JUMPER	1
21	00001504	B7-JUMPER	1
22	10001233	VOLTAGE CHANGE BOARD	1
23	909J13	END CLAMP	2
24	10001406	QUATTRO END COVER	1
25	10001403	QUATTRO FEED-THRU TERMINAL BLOCK	7
26	10001651	BRAKE JUMPER	1
27	10001650	BRAKE JUMPER	1
28	982226	LOCKWASHER 1/4 X .109 X .062	1
29	10001407	D-PT 2,5-MT END COVER	1
30	10001405	P-FU 5X20-5 FUSE PLUG	3*
31	10001259	#10-32 x 5/16 BUTTON SKT HEAD	2
32	10001264	#6-32 1/2 BUTTON SKT HEAD	1
33	10001263	#8-32 X 1/2 BUTTON SKT HEAD	1
34	987873	LOCKWASHER #10 ASA MEDIUM	2
35	27645	JUMPER	1

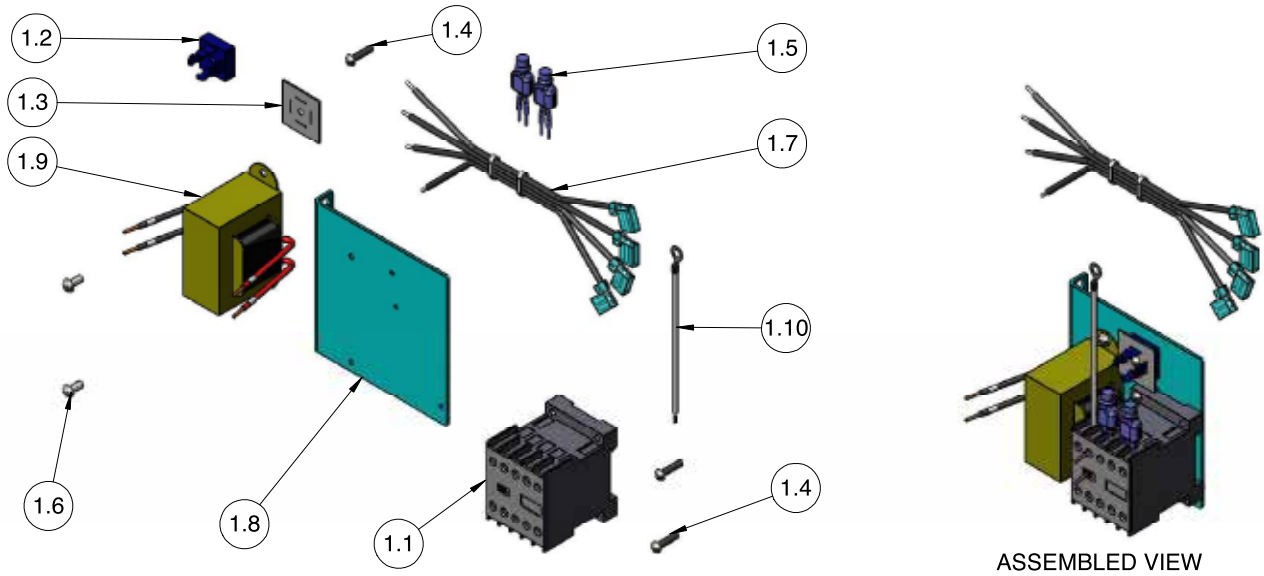
*HOIST PROVIDED WITH FUSES OR SHUNTS (29017) DEPENDING ON APPLICATION.

CONTACTOR PLATE ASSEMBLY FOR USE WITH DC BRAKE SINGLE PHASE 110/115-1-50/60-MODELS B, C, & F



Item No.	PART NO.	DESCRIPTION	Qty.
1	10001649	V1 CONTACTOR PLATE	1
2	29312	DIN-RAIL 5.00" LONG	1
3	24799	REVERSING CONTACTOR	1
4	20940	GROUND LABEL	1
5	27910	CAPACITOR MOUNTING BRACKET	2
6	27716	CAPACITOR	1
7	27257	REVERSE SWITCH	1
8	29910	CAPACITOR CAP	1
9	27925	SOLID STATE SWITCH CAP	1
10	27156	JUMPER R14	1
11	29911	JUMPER R5	1
12	29912	JUMPER R6	1
13	29913	JUMPER R7	1
14	29914	JUMPER R8	1
15	00000535	SURGE SUPPRESSOR	2
16	70246	RECTIFIER	1
17	70274	INSULATOR, RECTIFIER	1
18	957854	SCREW #6-32 NC-2 X 5/8" ROUND	1
19	00001500	B3 JUMPER	1
20	00001501	JUMPER - B4	1
21	00001504	B7-JUMPER	1
22	00001502	JUMPER-B1	1
23	00000376	B5 JUMPER	1
24	00000205	B6 JUMPER	1
25	00000537	B8 JUMPER	1
26	00000538	B9 JUMPER	1
27	10001403	QUATTRO FEED-THRU TERMINAL BLOCK	9
28	10001408	CLIPFIX 35-5 END CLAMP	1
29	10001406	QUATTRO END COVER	1
30	51847	JUMPER	9
31	00000321	R13 JUMPER	1
32	987873	LOCKWASHER #10 ASA MEDIUM	2
33	10001259	#10-32 x 5/16 BUTTON SKT HEAD	2
34	10001260	#8-32 X 5/16 BUTTON SKT HEAD	4
35	10001425	JUMPER FBS 2-3,5	1

**CONTACTOR PLATE ASSEMBLY FOR USE WITH DC BRAKE
DIRECT CONTROL 3 80/415/460-3-50/60
MODELS B, C, & F**



Item No.	PART NO.	DESCRIPTION	Qty.
1.7.1	10001121	CONTACTOR PLATE S/A	1
1.1	35928	MAINLINE CONTACTOR	1
1.2	70246	RECTIFIER	1
1.3	70274	INSULATOR, RECTIFIER	1
1.4	10001264	#6-32 X 1/2 BUTTON SKT HEAD SCREW	3
1.5	00001505	SURGE SUPPRESSOR	2
1.6	10001260	#8-32 X 5/16 BUTTON SKT HEAD SCREW	2
1.7	00000326	RECTIFIER HARNESS	1
1.8	10001120	CONTACTOR PLATE	1
1.9	10001119	TRANSFORMER	1
1.10	27189	G-Y JUMPER	1