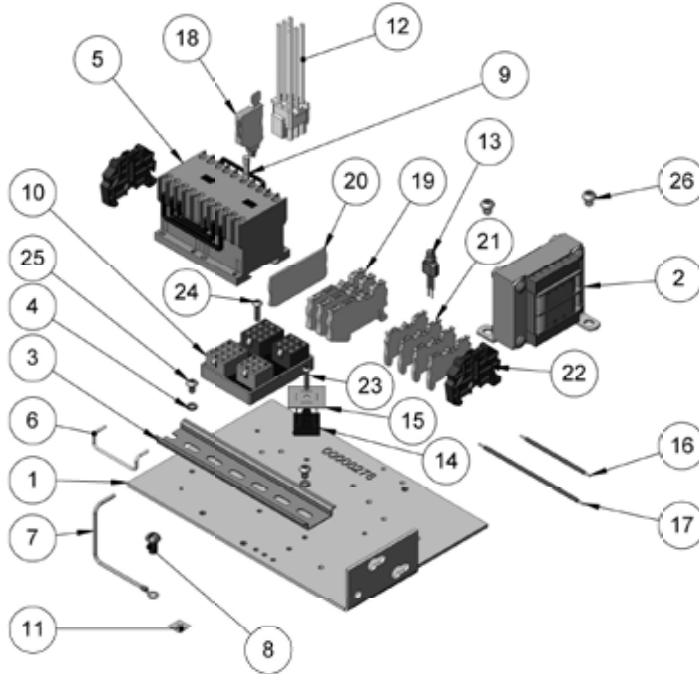


# CONTACTOR PLATE ASSEMBLY FOR USE WITH DC BRAKE BHSE 3 PHASE 220/230-380/415/460-3-50/60-MODELS J, JJ, L, LL, R, & RR

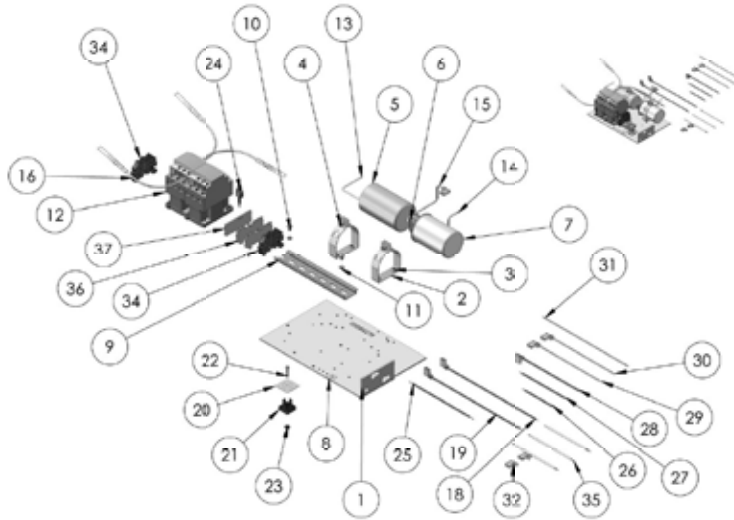


CONTACTOR BKT S/A	TRANSFORMER	REVERSING CONTACTOR	SECONDARY VOLTAGE
10001661	00000594T	28860	24 V
10001662	00000595T	24797	48 V
10001663	00000596T	24799	110 V

Item No.	PART NO.	DESCRIPTION	Qty.
1	00000278	CONTACTOR BRACKET	1
2	SEE TABLE	TRANSFORMER-V2-230/460//24V	1
3	29010	DIN-RAIL 6.50" LONG	1
4	987873	LOCKWASHER #10 ASA MEDIUM	2
5	SEE TABLE	REVERSING CONTACTOR	1
6	51847	JUMPER	1
7	27189	JUMPER (G-Y)	1
8	987827	SCREW 1/4-20 UNC-2A X 1/2"	1
9	00000393	FUSE-5MM X 20MM-500MA	1
9*	00000394	FUSE 5MM X 20MM -1A	2
10	10001233	VOLTAGE CHANGE BOARD	1
11	20940	GROUND LABEL	1
12	00001733	HARNESS V2/CONTACTOR	1
13	00000535	SURGE SUPPRESSOR	1
14	70246	RECTIFIER	1
15	70274	INSULATOR, RECTIFIER	1
16	00000537	B8 JUMPER	1
17	00000538	B9 JUMPER	1
18	10001405	P-FU 5X20-5 FUSE PLUG	1
19	10001404	PT 2,5-TG DISCONNECT TERMINAL BLOCK	3
20	10001407	D-PT 2,5-MT END COVER	1
21	10001401	PT 1,5/S FEED-THROUGH TERMINAL BLOCK	4
22	909J13	END CLAMP	2
23	10001264	#6-32 3/4 BUTTON SKT HEAD	1
24	10001263	#8-32 X 5/8 BUTTON SKT HEAD	1
25	10001259	#10-32 x 5/16 BUTTON SKT HEAD	2
26	10001262	1/4-20 X 5/16 BUTTON SKT HEAD	2

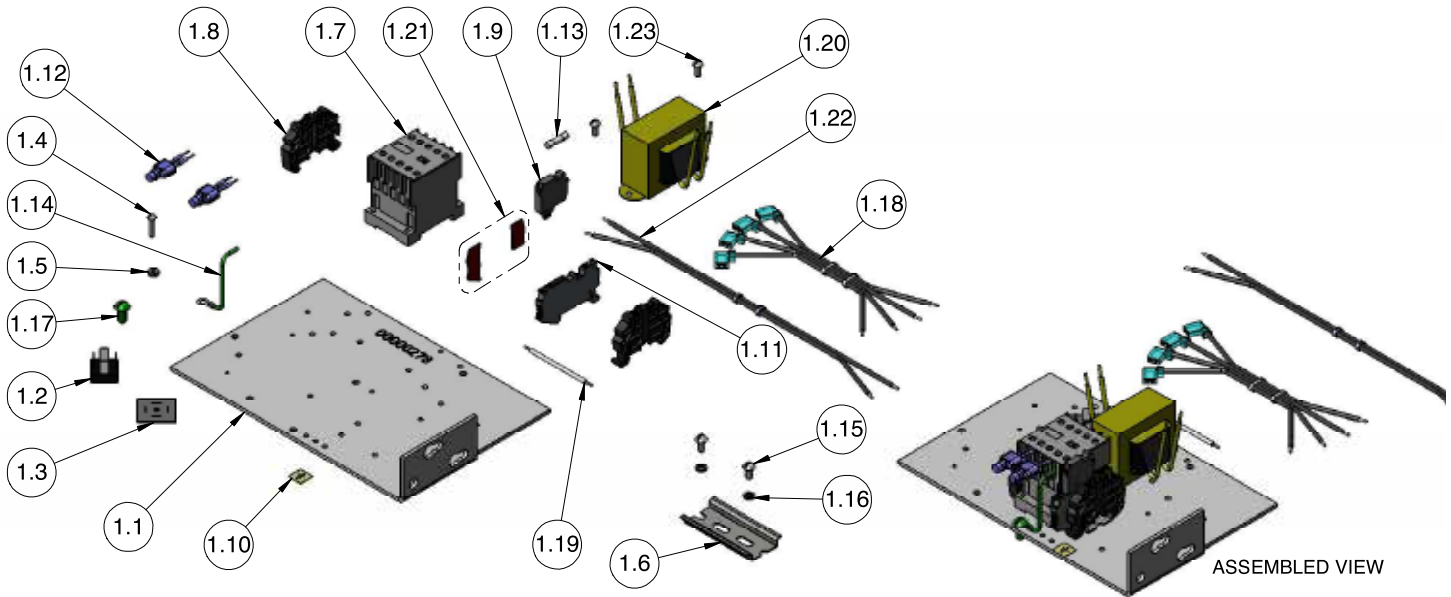
\*HOIST PROVIDED WITH FUSES OR SHUNTS (29017) DEPENDING ON APPLICATION.

**CONTACTOR PLATE ASSEMBLY FOR USE WITH DC BRAKE  
SINGLE PHASE 110/115-1-50/60  
MODELS J, L, & R**



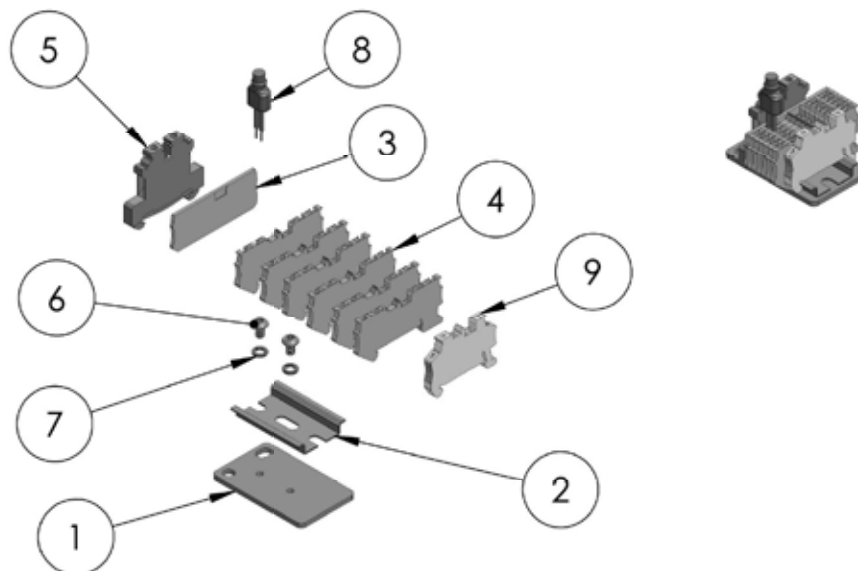
Item No.	PART NO.	DESCRIPTION	Qty.
1	10001856	CONTACTOR BRACKET	1
2	35268	CLAMP	2
3	10001261	#10-24 X 3/16 BUTTON SKT HEAD	4
4	10001266	#10-24 X 3/8" SKT HEAD CAP SCREW LS	2
5	35279	START CAPACITOR	1
6	35285	RUNCAPACITOR INSULATOR	1
7	35278	CAPACITOR, RUN	1
8	20940	GROUND LABEL	1
9	29010	DIN-RAIL 6.50" LONG	1
10	10001259	#10-32 x 5/16 BUTTON SKT HEAD	2
11	987873	LOCKWASHER #10 ASA MEDIUM	2
12	28905	REVERSING CONTACTOR	1
13	29035	JUMPER (R4)	1
14	29034	JUMPER (R10)	1
15	00000758	JUMPER V2 1 PHASE (R9)	1
16	29036	JUMPER (R2)	1
17	29037	JUMPER (R3)	1
18	00000755	JUMPER V2 1 PHASE (R7)	1
19	00000757	JUMPER V2 1 PHASE (R6)	1
20	70274	INSULATOR, RECTIFIER	1
21	70246	RECTIFIER	1
22	10001264	#6-32 3/4 BUTTON SKT HEAD	1
23	982470	HEX HEAD MACHINE NUT	1
24	00001505	SURGE SUPPRESSOR	1
25	00000336	JUMPER (R12)	1
26	00000537	B8 JUMPER	1
27	00000538	B9 JUMPER	1
28	00000376	B5 JUMPER	1
29	00001500	B3 JUMPER	1
30	00001501	JUMPER - B4	1
31	00001503	JUMPER-B2	1
32	983197	WIRING TERMINAL	2
33	29038	JUMPER R5	1
34	909J13	END CLAMP	2
35	51847	JUMPER	3
36	10001403	QUATTRO FEED-THRU TERMINAL BLOCK	2
37	10001406	QUATTRO END COVER	1

# CONTACTOR PLATE ASSEMBLY FOR USE WITH DC BRAKE DIRECT CONTROL 380/415/460-3-50/60 MODELS J, JJ, L, LL, R, & RR



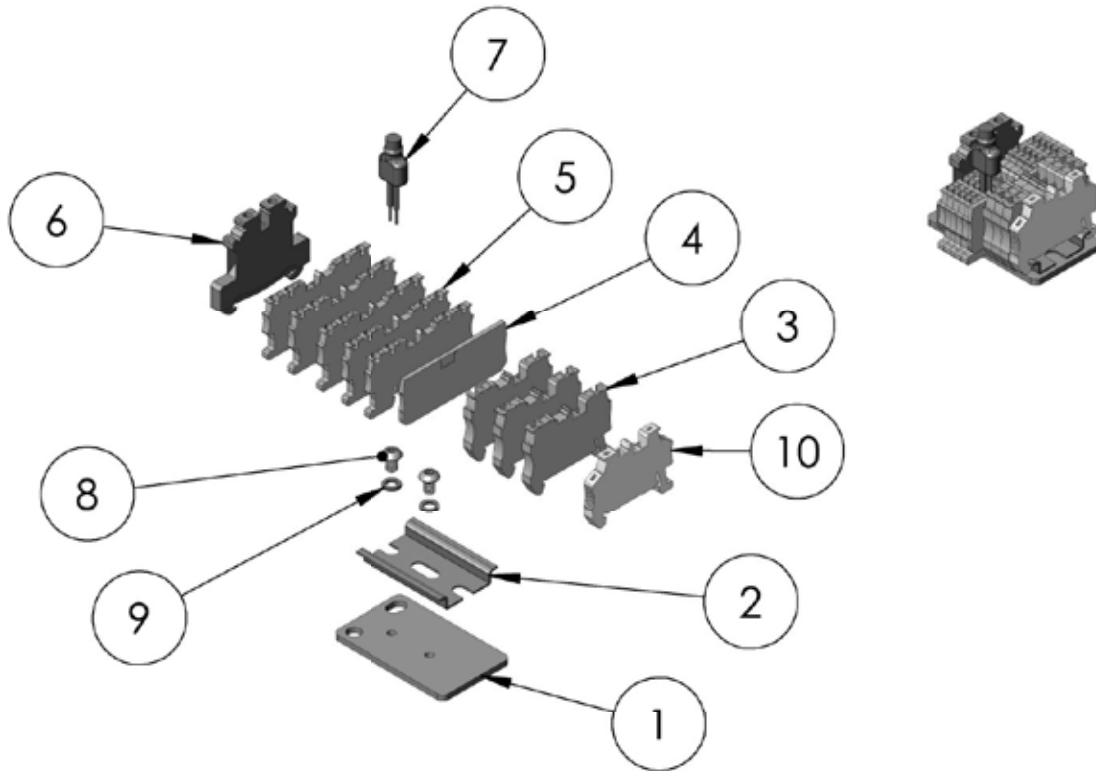
Item No.	PART NO.	DESCRIPTION	Qty.
1	10001118	CONTACTOR PLATE S/A	1
1.1	00000278	CONTACTOR BRACKET	1
1.2	70246	RECTIFIER	1
1.3	70274	RECTIFIER INSULATOR	1
1.4	10001264	#6-32 X 1/2 BUTTON SKT HEAD SCREW	1
1.5	982470	NUT #6-32 UNC-2A HEX MACHINE	1
1.6	00000323	DIN RAIL 2.75" LONG	1
1.7	28904	CONTACTOR, NON-REVERSING	1
1.8	909J13	END CLAMP	2
1.9	29019	TERMINAL STRIP CARTRIDGE	1
1.10	20940	GROUND LABEL	1
1.11	29018	FUSIBLE TERMINAL STRIP	1
1.12	00000535	SURGE SUPPRESSOR	2
1.13	00000393	FUSE-5MM X 20MM-500MA	1
1.14	27189	JUMPER-G/Y-#16 AWG	1
1.15	10001259	10-32 X 5/16 BUTTON SKT HEAD SCREW	2
1.16	987873	LOCKWASHER #10 ASA MEDIUM	2
1.17	987827	SCREW 1/4-20 UNC-2A X 1/2"	1
1.18	00000326	RECTIFIER HARNESS	1
1.19	51845	JUMPER	1
1.20	10001114	TRANSFORMER	1
1.21	00000398	TERMINAL STRIP COVER SEGMENT	1
1.22	00000827	'H5/H6' JUMPER HARNESS	1
1.23	10001260	#8-32 X 5/16 BUTTON SKT HEAD SCREW	2

# SINGLE PHASE TERMINAL STRIP ASSEMBLY MODELS J, JJ, L, LL, R, RR, & RRS



ITEM NO.	PART NUMBER	DESCRIPTION	QTY.
1	10001409	MOUNTING BRACKET	1
2	10001466	DIN-RAIL 2.0" LONG	1
3	10001406	QUATTRO END COVER	1
4	10001403	QUATTRO FEED-THRU TERMINAL BLOCK	6
5	10001433	GROUNDING BLOCK GREEN/YELLOW	1
6	10001259	#10-32 x 5/16 BUTTON SKT HEAD	2
7	987873	LOCKWASHER #10 ASA MEDIUM	2
8	00000535	SURGE SUPPRESSOR	1

# THREE PHASE TERMINAL STRIP ASSEMBLY MODELS J, JJ, L, LL, R, RR, & RRS



ITEM NO.	PART NUMBER	DESCRIPTION	QTY.
1	10001409	MOUNTING BRACKET	1
2	10001466	DIN-RAIL 2.0" LONG	1
3	10001424	TERMINAL BLOCK-FEED THRU	3
4	10001406	QUATTRO END COVER	1
5	10001403	QUATTRO FEED-THRU TERMINAL BLOCK	5
6	10001433	GROUNDING BLOCKGREEN/YELLOW	1
7	0000535	SURGE SUPPRESSOR	1
8	10001259	#10-32 x 5/16 BUTTON SKT HEAD	2
9	987873	LOCKWASHER #10 ASA MEDIUM	2
10	10001408	CLIPFIX 35-5 END CLAMP	1