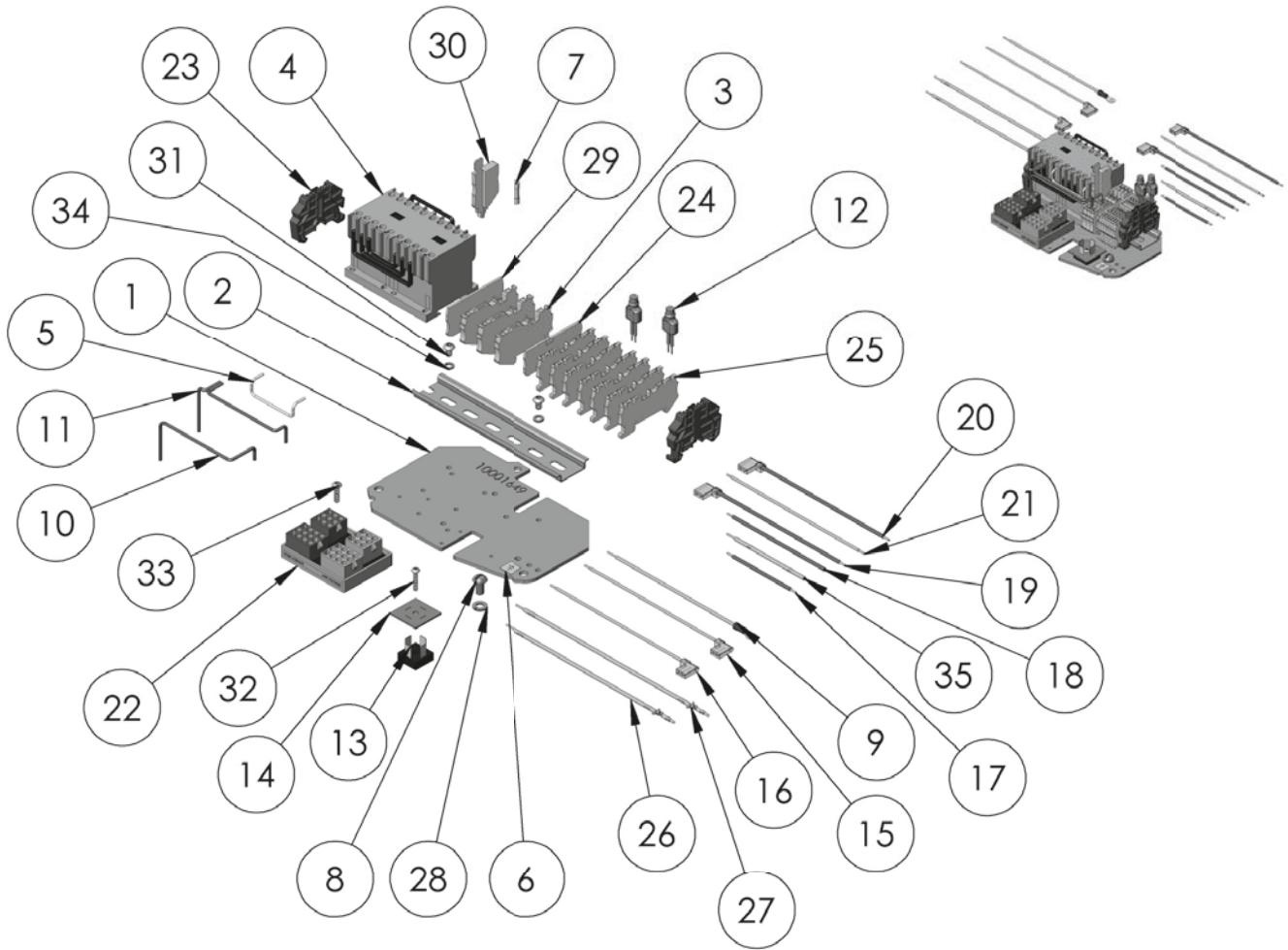


**FIGURE 44. CONTACTOR PLATE ASSEMBLY FOR USE WITH DC BRAKE
BHSE FUSED-3 PHASE 220/230-380/415/460-3-50/60 MODELS B, C, & F**

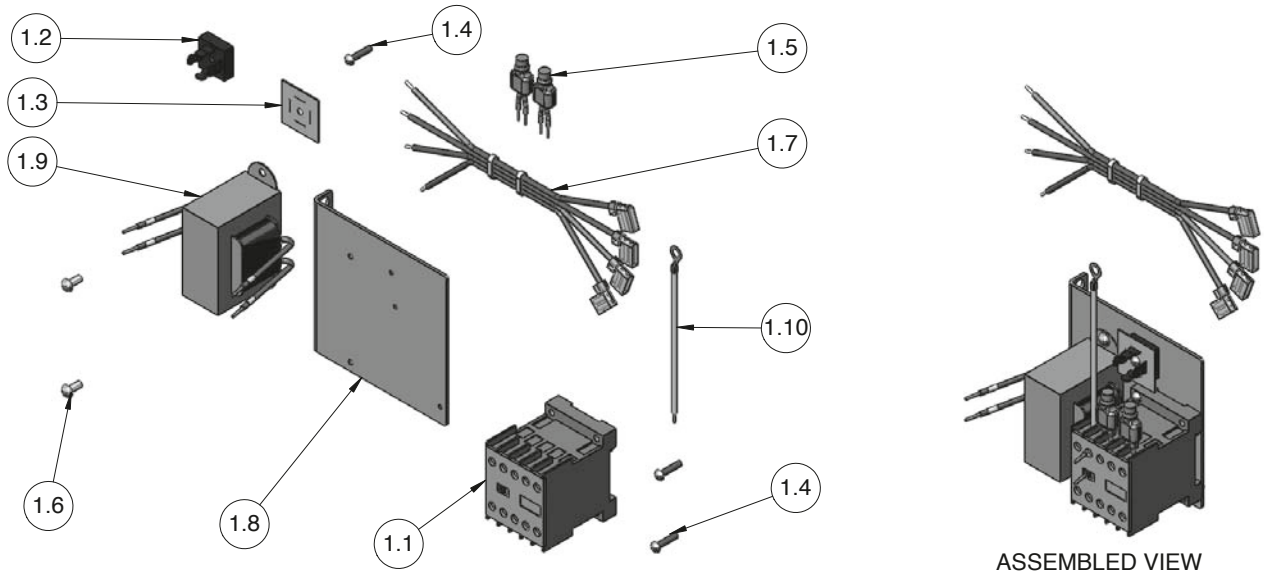


CONTACTOR BKT S/A	REVERSING CONTACTOR	SECONDARY VOLTAGE
10001638	28860	24V
10001639	24797	48V
10001640	24799	115V

Item No.	PART NO.	DESCRIPTION	Qty.
1	10001649	V1 CONTACTOR PLATE	1
2	29010	DIN-RAIL 6.50" LONG	1
3	10001404	PT 2,5-TG DISCONNECT TERMINAL BLOCK	3
4	SEE TABLE	REVERSING CONTACTOR	1
5	51847	JUMPER	1
6	20940	GROUND LABEL	1
7	00000393	FUSE-5MM X 20MM-500MA	1
7	00000394	FUSE-5MM X 20MM-1A	2
8	987827	SCREW 1/4-20 UNC-2A X 1/2"	1
9	27189	JUMPER (G-Y)	1
10	00000750	JUMPER WIRE	1
11	00000751	JUMPER WIRE	1
12	00000535	SURGE SUPPRESSOR	2
13	70246	RECTIFIER	1
14	70274	RECTIFIER INSULATOR	1
15	00001500	B3 JUMPER	1
16	00001501	B4 JUMPER	1
17	00000537	B8 JUMPER	1
18	00000538	B9 JUMPER	1
19	00000376	B5 JUMPER	1

Item No.	PART NO.	DESCRIPTION	Qty.
20	00000205	B6 JUMPER	1
21	00001504	B7-JUMPER	1
22	10001233	VOLTAGE CHANGE BOARD	1
23	909J13	END CLAMP	2
24	10001406	QUATTRO END COVER	1
25	10001403	QUATTRO FEED-THRU TERMINAL BLOCK	7
26	10001651	BRAKE JUMPER	1
27	10001650	BRAKE JUMPER	1
28	982226	LOCKWASHER 1/4 X .109 X .062	1
29	10001407	D-PT 2,5-MT END COVER	1
30	10001405	P-FU 5X20-5 FUSE PLUG	3
31	10001259	#10-32 x 5/16 BUTTON SKT HEAD	2
32	10001264	#6-32 1/2 BUTTON SKT HEAD	1
33	10001263	#8-32 X 1/2 BUTTON SKT HEAD	1
34	987873	LOCKWASHER #10 ASA MEDIUM	2
35	27645	JUMPER	1

FIGURE 47. CONTACTOR PLATE ASSEMBLY FOR USE WITH DC BRAKE DIRECT CONTROL 3 80/415/460-3-50/60 MODELS B, C, & F



Item No.	PART NO.	DESCRIPTION	Qty.
1.7.1	10001121	CONTACTOR PLATE S/A	1
1.1	35928	MAINLINE CONTACTOR	1
1.2	70246	RECTIFIER	1
1.3	70274	INSULATOR, RECTIFIER	1
1.4	10001264	#6-32 X 1/2 BUTTON SKT HEAD SCREW	3
1.5	00001505	SURGE SUPPRESSOR	2
1.6	10001260	#8-32 X 5/16 BUTTON SKT HEAD SCREW	2
1.7	00000326	RECTIFIER HARNESS	1
1.8	10001120	CONTACTOR PLATE	1
1.9	10001119	TRANSFORMER	1
1.10	27189	G-Y JUMPER	1

LUBRICANTS

Part Number for Packaged Lubricants Used in the Lodestar Electric Chain Hoists (Refer to page 14 for Lubrication Instructions)		
Lubricant Usage	Type of Lubricant	Part Numbers and Packaged Quantity of Lubricants
Hoist Gears	Grease (Special)	Models A to H uses 28605
		Model J to RRT excluding RRS uses 28617
		Model RRS uses 1 each of both 28605 and 28617
Load Chain	Oil	28608 for 1 Pint Can 28619 for 1 Gal Can
Limit Switch Shaft Threads	*Oil	"3 in 1" or Light Machine Oil-obtain locally
Lower Hook Thrust Bearing	*Oil	Heavy Machine Oil obtain locally

*These oils are not furnished by CM in Packaged Quantities. When ordering lubricants, specify the type of lubricant, part number and packages quantity required.

Touch-up Paints for Lodestar Electric Chain Hoists:

Hoist Order *(1) case (12-12 oz. Aerosol Cans) of Black Touch-up paints Part Number 84189.

*Touch-up paints are only available in case quantities.

NOTE: When painting hoists, also order warning labels, identification labels, etc. that may be coated during painting.

RECOMMENDED SPARE PARTS

To insure continued service of the Lodestar Hoist, the following is a list of parts that are recommended to be kept on hand at all times to replace parts that have worn or failed.

Part Description	Models B, C, H	Models J-RR	Model RRS	Qty. Required Per Hoist
Limit Switch Kit	31631	31636	31636	1
Transformer	See Contactor Plate Section	See Contactor Plate Section	See Contactor Plate Section	0 or 1
Fuse - 500mA	00000393	00000393	00000393	1
Fuse - 1A	00000394	00000394	00000394	2
CM Terminal Pin-Extraction Tool (Dual Voltage Only)	27163	27163	27163	1
Suspension Bolts	987554	36846	10001047/82638	2 (1 EA RRS)
Clutch Spring Service Kit	N/A	HW5800A00SP	HW5800A00SP	1